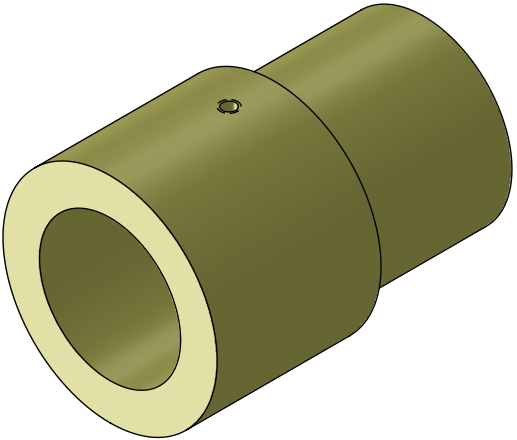
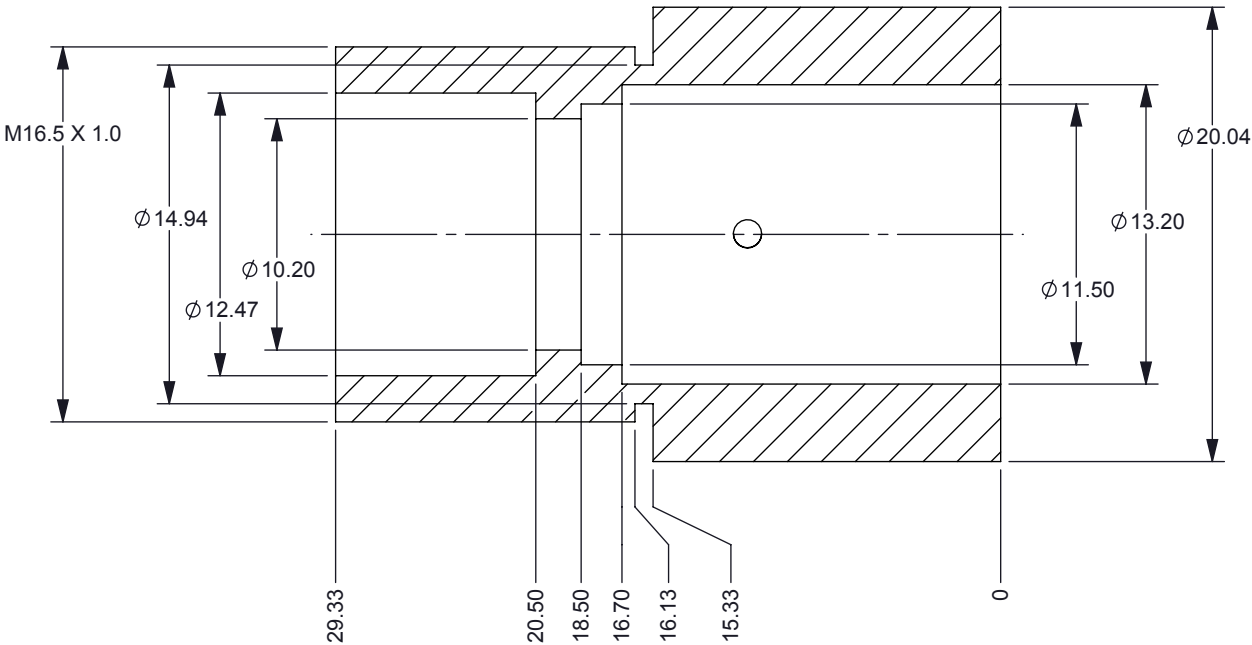
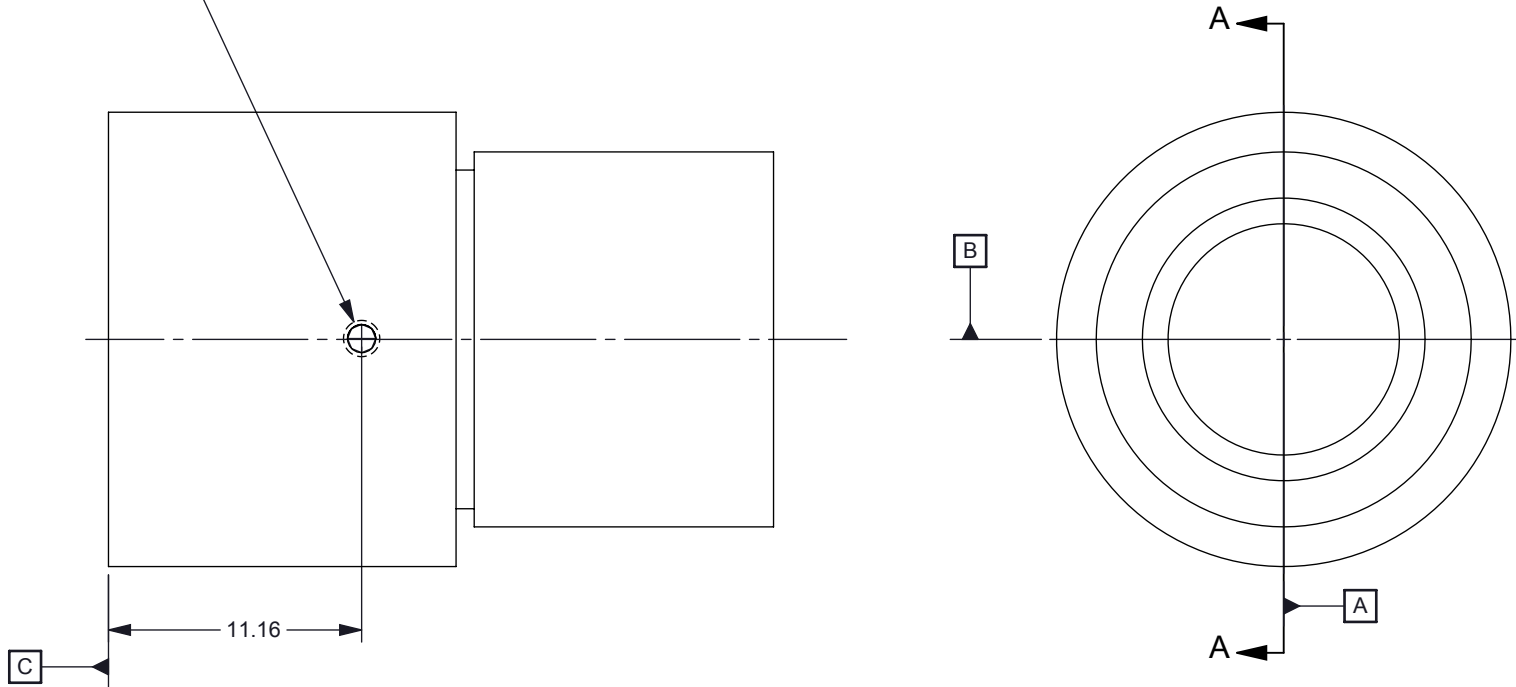


- NOTES: UNLESS OTHERWISE SPECIFIED:
- MATERIAL: 6061-T6 ALUMINUM
 - LIGHT BEADBLAST EXTERIOR SURFACES ONLY (MATTE FINISH); MASK INTERNAL FEATURES AND THREADING TO ENSURE TOLERANCES ARE HELD.
 - FINISH: ANOPLATE ANOBLACK EC PROCESS. ALTERNATE BLACK ANODIZING PROCESSES NOT CONSIDERED AN EQUIVALENT

REVISIONS			
REV	DESCRIPTION	DATE	BY
A	ECO #2136196 - INITIAL RELEASE	09/20/13	RDR
B	REVISED ONE OF THE INSIDE DIAMETERS	9/27/13	



M1.60x0.35
THIS SIDE ONLY



SECTION A-A
SCALE 3 : 1